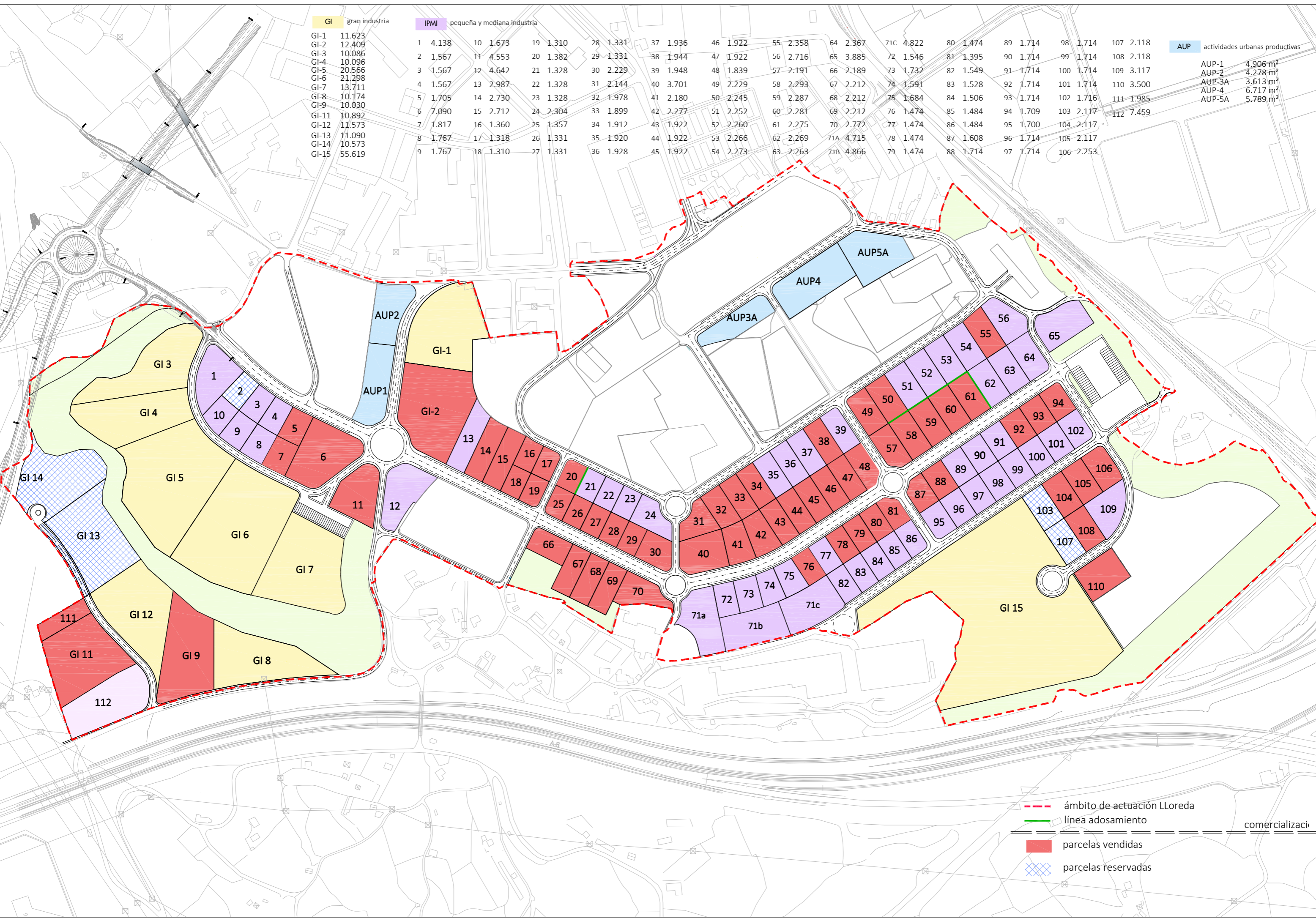


GI	gran industria
GI-1	11.623
GI-2	12.409
GI-3	10.086
GI-4	10.096
GI-5	20.566
GI-6	21.298
GI-7	13.711
GI-8	10.174
GI-9	10.030
GI-11	10.892
GI-12	11.573
GI-13	11.090
GI-14	10.573
GI-15	55.619

IPMI	pequeña y mediana industria
1	4.138
2	1.567
3	1.567
4	1.567
5	1.705
6	7.090
7	1.817
8	1.767
9	1.767
10	1.673
11	4.553
12	4.642
13	2.987
14	2.730
15	2.712
16	1.360
17	1.318
18	1.310
19	1.310
20	1.382
21	1.328
22	1.328
23	1.328
24	2.304
25	1.357
26	1.331
27	1.331
28	1.331
29	1.331
30	2.229
31	2.144
32	1.978
33	1.899
34	1.912
35	1.920
36	1.928
37	1.936
38	1.944
39	1.948
40	3.701
41	2.180
42	2.277
43	1.922
44	1.922
45	1.922
46	1.922
47	1.922
48	1.839
49	2.229
50	2.245
51	2.252
52	2.260
53	2.266
54	2.273
55	2.358
56	2.716
57	2.191
58	2.293
59	2.287
60	2.281
61	2.275
62	2.269
63	2.263
64	2.367
65	3.885
66	2.189
67	2.212
68	2.212
69	2.212
70	2.772
71a	4.715
71b	4.866
71c	4.822
72	1.546
73	1.732
74	1.591
75	1.684
76	1.474
77	1.474
78	1.474
79	1.474
80	1.474
81	1.395
82	1.549
83	1.528
84	1.506
85	1.484
86	1.484
87	1.608
88	1.714
89	1.714
90	1.714
91	1.714
92	1.714
93	1.714
94	1.709
95	1.700
96	1.714
97	1.714
98	1.714
99	1.714
100	1.714
101	1.714
102	1.716
103	2.117
104	2.117
105	2.117
106	2.253
107	2.118
108	2.118
109	3.117
110	3.500
111	1.985
112	7.459

AUP	actividades urbanas productivas
AUP-1	4.906 m ²
AUP-2	4.278 m ²
AUP-3A	3.613 m ²
AUP-4	6.717 m ²
AUP-5A	5.789 m ²



GI	gran industria
GI-1	11.623
GI-2	12.409
GI-3	10.086
GI-4	10.096
GI-5	20.566
GI-6	21.298
GI-7	13.711
GI-8	10.174
GI-9	10.030
GI-11	10.892
GI-12	11.573
GI-13	11.090
GI-14	10.573
GI-15	55.619

IPMI	pequeña y mediana industria
1	4.138
2	1.567
3	1.567
4	1.567
5	1.705
6	7.090
7	1.817
8	1.767
9	1.767
10	1.673
11	4.553
12	4.642
13	2.987
14	2.730
15	2.712
16	1.360
17	1.318
18	1.310
19	1.310
20	1.382
21	1.328
22	1.328
23	1.328
24	2.304
25	1.357
26	1.331
27	1.331
28	1.331
29	1.331
30	2.229
31	2.144
32	1.978
33	1.899
34	1.912
35	1.920
36	1.928
37	1.936
38	1.944
39	1.948
40	3.701
41	2.180
42	2.277
43	1.922
44	1.922
45	1.922
46	1.922
47	1.922
48	1.839
49	2.229
50	2.245
51	2.252
52	2.260
53	2.266
54	2.273
55	2.358
56	2.716
57	2.191
58	2.293
59	2.287
60	2.281
61	2.275
62	2.269
63	2.263
64	2.367
65	3.885
66	2.189
67	2.212
68	2.212
69	2.212
70	2.772
71a	4.715
71b	4.866
71c	4.822
72	1.546
73	1.732
74	1.591
75	1.684
76	1.474
77	1.474
78	1.474
79	1.474
80	1.474
81	1.395
82	1.549
83	1.528
84	1.506
85	1.484
86	1.484
87	1.608
88	1.714
89	1.714
90	1.714
91	1.714
92	1.714
93	1.714
94	1.709
95	1.700
96	1.714
97	1.714
98	1.714
99	1.714
100	1.714
101	1.714
102	1.716
103	2.117
104	2.117
105	2.117
106	2.253
107	2.118
108	2.118
109	3.117
110	3.500
111	1.985
112	7.459

AUP	actividades urbanas productivas
AUP-1	4.906 m ²
AUP-2	4.278 m ²
AUP-3A	3.613 m ²
AUP-4	6.717 m ²
AUP-5A	5.789 m ²

- ámbito de actuación Lloreda
- línea adosamiento
- parcelas vendidas
- parcelas reservadas